



Bay Area League of Women Voters League Day
“Reduce, Reuse, Recycle: *Taking it to the Next Level*”

**Richard Sinkoff, Director,
Environmental Programs and Planning Division
Douglas Herman, Environmental Scientist**

Port of Oakland
BENEFICIAL REUSE OF DREDGE MATERIALS

MATERIALS MANAGEMENT PROGRAM

DECONSTRUCTION OF OAKLAND ARMY BASE WAREHOUSES

January 29, 2011





Legend:

-  Maritime Area
-  CRE Area
-  OIA Area

Note: Boundaries are approximate. Confirm property type and any restrictions.



BENEFICIAL REUSE OF DREDGE MATERIALS

- **95% of all Dredge Material from the Port can be used in Sensitive Habitats**
- **Middle Harbor Shoreline Park**
- **Montezuma and Hamilton Wetlands**



PORT OF OAKLAND

Project Purpose

- Accommodate the **Latest Generation of Container Vessels**
- The design vessel transports over **6500 twenty-foot equivalent units (TEU's)** of containers.
- **46 ft. design draft, 1,139 ft. long, and 140 ft. wide**



Project Components



PORT OF OAKLAND





PORT OF OAKLAND

Project Components



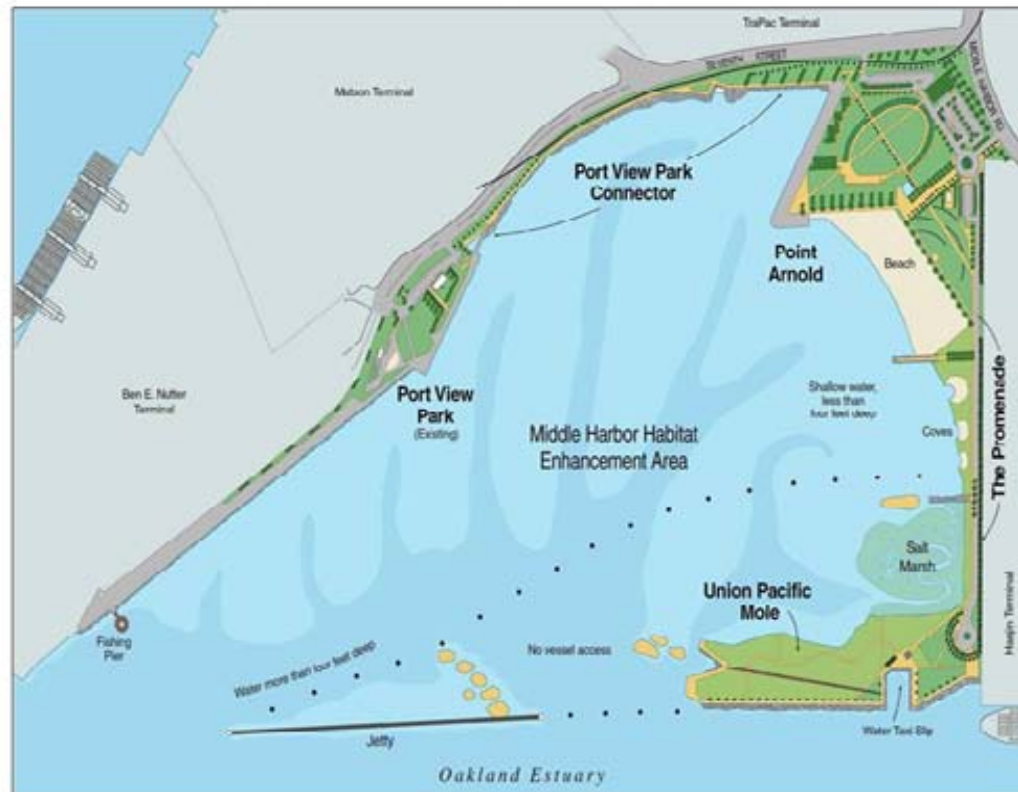


PORT OF OAKLAND

Project Components

Middle Harbor habitat enhancement area

- Military Base reuse
- Restoring **Habitat**
- Fishing, Picnicking, Family activities, and Science programs



Design features





PORT OF OAKLAND

Project Components

Dredging Status

- Entrance channel :
Complete to -50 ‘

***Environmental :**
Specialized digging
equipment to control depth



Closed environmental bucket





PORT OF OAKLAND

Project Components

Middle Harbor habitat
enhancement area

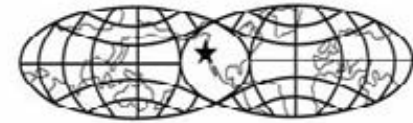


Placing dredged material into MHEA





Project Components



PORT OF OAKLAND



Hamilton wetlands restoration project

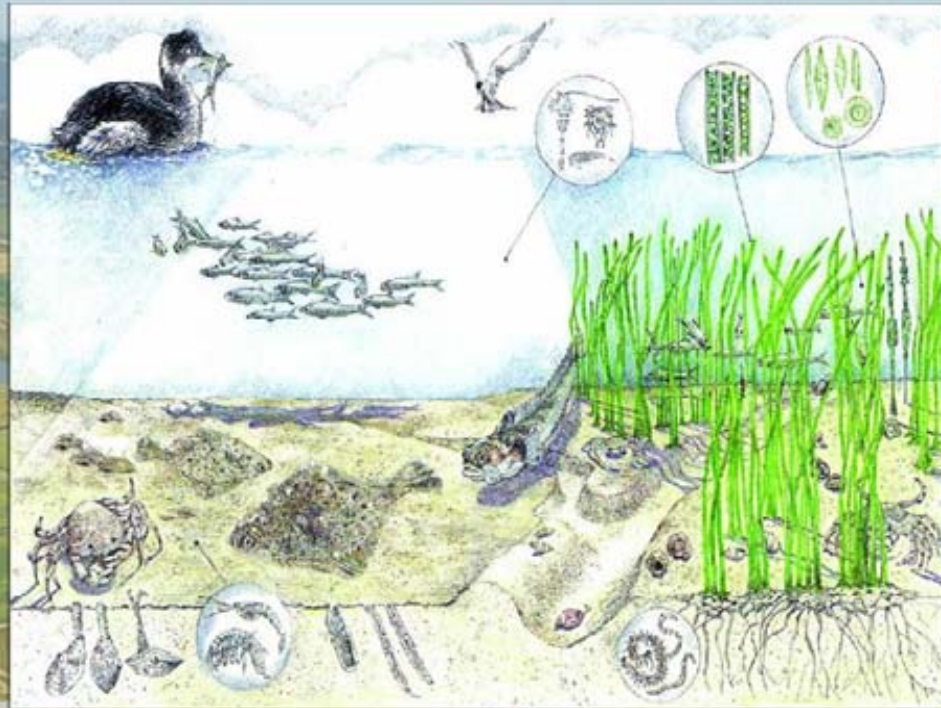


PORT OF OAKLAND

Project Components

Beneficial use of Dredge Material

- Wetlands Restoration :
Hamilton and Montezuma
- Restoration of
Shallow Water





PORT OF OAKLAND

Project Components

Beneficial use of Dredge Material

- Wetlands Restoration :
Hamilton and Montezuma
- Restoration of
Shallow Water

